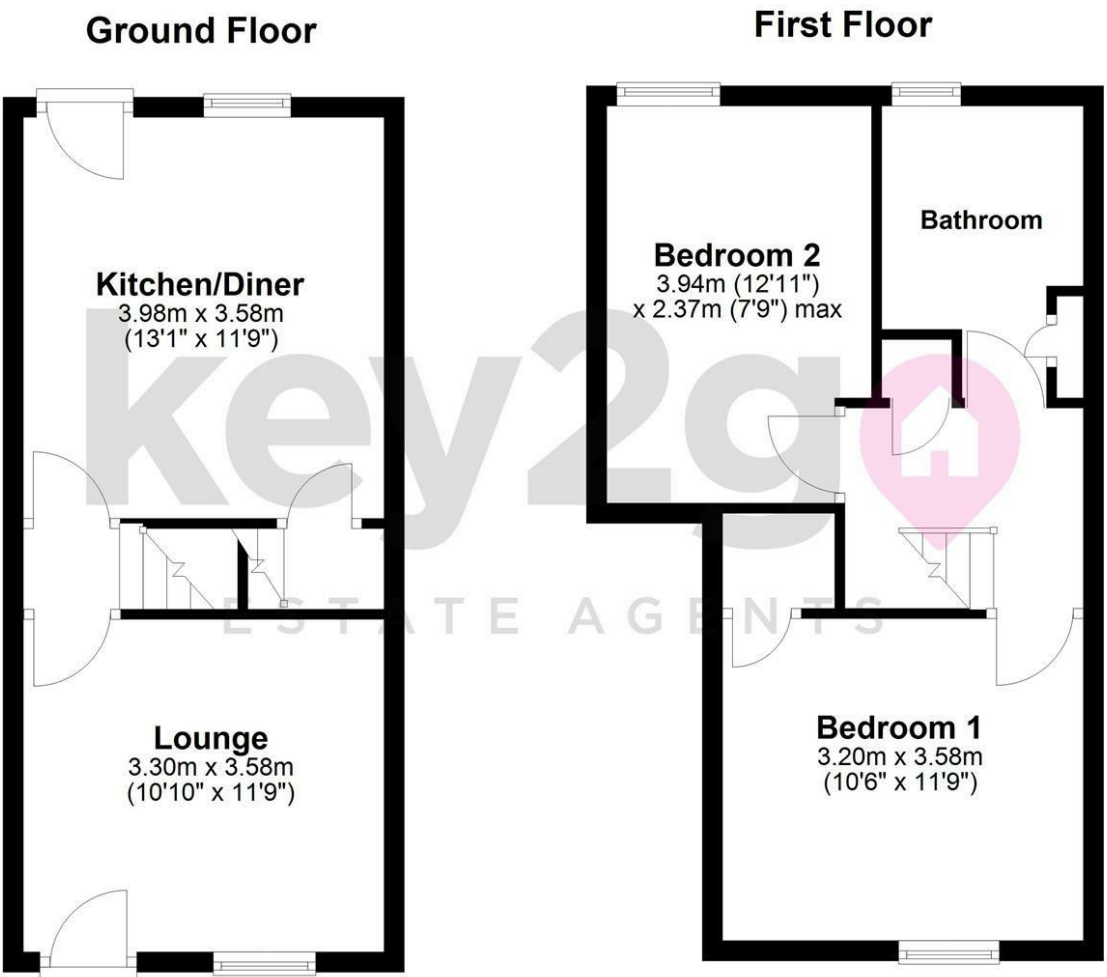


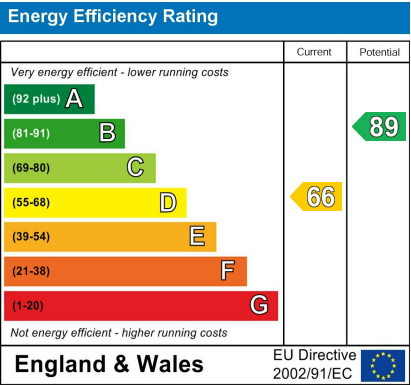
Floorplan



Area Map



Energy Efficiency Graph



Viewing

Please contact our Lettings Team Office on 0114 2478819 if you wish to arrange a viewing appointment for this property or require further information.

These particulars, whilst believed to be accurate are set out as a general outline only for guidance and do not constitute any part of an offer or contract. Intending purchasers should not rely on them as statements of representation of fact, but must satisfy themselves by inspection or otherwise as to their accuracy. No person in this firms employment has the authority to make or give any representation or warranty in respect of the property.



14 Manvers Road
Beighton, Sheffield, S20 1AY

£850 PCM



14 Manvers Road
Beighton, Sheffield, S20 1AY
£850 PCM



Arrange your viewing today for this stylish, two bedroomed terrace house located in the ever popular village of Beighton. Having two good sized reception rooms, a stylish kitchen/diner and a good sized garden. Benefiting from off road parking and is well located for road links to the M1 Motorway.

SUMMARY
Arrange your viewing today for this stylish, two bedroomed terrace house located in the ever popular village of Beighton. Having two good sized reception rooms, a stylish kitchen/diner and a good sized garden. Benefiting from off road parking and is well located for road links to the M1 Motorway.

